

ONWA[®]

MARINE ELECTRONICS



MODEL
KP-38

5-inch GPS Chart Plotter



K-CHART
Free detailed sea map



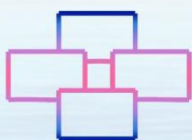
Support C-Map MAX



Compatible with Navionics+



GOTO TRACK NAVIGATION
Leads you back home



Multiple Display Modes



Proximity Waypoint Alarm



Perspective View



Different Color Palettes



SD Card System Update



Tide Table



Celestial



Display AIS Info

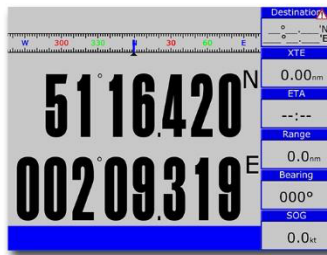
IP66
Ingress Protection

NMEA0183
NMEA Interface

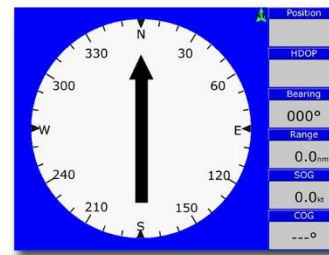
➤ DIFFERENT DISPLAY MODES



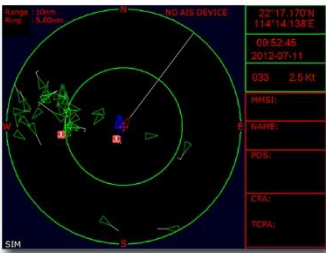
Plotter



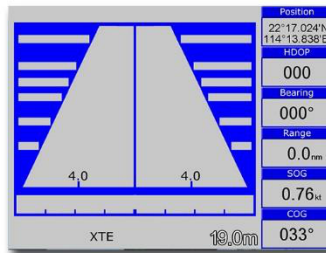
Navigation Data



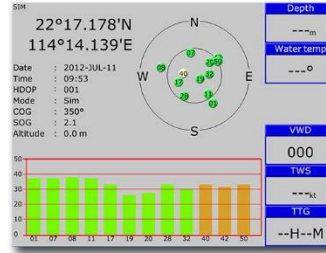
Compass



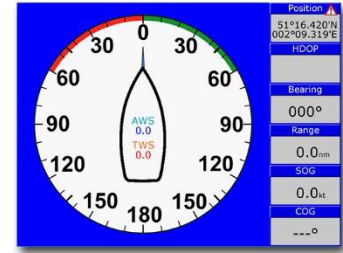
AIS



Highway



Satellite



Wind

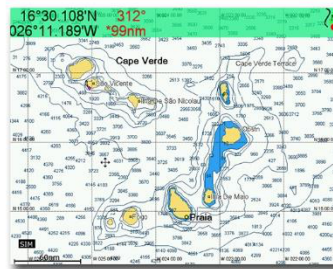
➤ GPS CHART PLOTTER

Compatible with the following mapping systems:



K-Chart Mapping System

ONWA Chart Plotters are compatible with K-Chart Mapping and displays worldwide Electronic Charts that users can use for FREE.



C-Map Max

ONWA Chart Plotters are also compatible with C-Map Max showing Nautical Charts



Navionics+

ONWA Chart Plotters when used with Navionics+ charts shows Nautical Charts and Sonar Charts. Advance options also include: Highlight Shallow Area, Adjust Contour Density and Shallow Fishing Range

Optional
Accessory



GPS Patch Antenna
with 4m cable (SMA connector)
Ingress Protection IP66
(Specify when ordering)

Standard
Accessory



KA-07
External GPS Antenna
with 10m cable

PLOTTER CHARACTERISTICS

| | |
|-------------------|---|
| Waypoints/icons | 12000 user waypoints with name, symbol 3 system waypoints: MOB, Start, Cursor 10 proximity waypoints |
| Routes | 30 routes waypoint up to 170 points each, plus MOB and Track Navigation or GOTO Track modes |
| Tracks | 8,000 points automatic track log;; 10 saved tracks (up to 8000 track points each) lets you retrace your path in both directions |
| Alarms | XTE, Anchor drag, arrival, speed, voltage, proximity waypoint, Timer and AIS (CPA and TCPA) alarm |
| Drawing | 1000 Drawing Marks; 2000 Drawing Lines (40 points each); 1000 Drawing Place Name; 8 Colors for Drawing |
| Palette | Normal Daylight exposed to sunlight Night in dark environment NOAA paperchart colors Built-in Worldwide Tide data |
| Tides | Lat/Lon |
| Position format | Worldwide |
| Basemap | Compatible with K-Chart 2.0, K-Chart 3.0, C-Map Max and Navionics+ |
| External Map | Internal backup of user settings or external SD-card |
| User data storage | 5secs to 60 mins or 0.01 to 10nm |
| Plot Interval | 0.001 to 700nm |
| Plotting scales | On/off (Available for C-Map only) |
| Perspective View | Sunrise/Sunset Moonrise/Moonset |
| Celestial | |

NMEA SENTENCE SUPPORTED

INPUT: (Auto scan Baudrate)
GGA, GLL, GSA, GSV, RMC, HDG, HDM, HDT
VTG, ZDA, MTW, VWR, VWT, MWD, VPW, VHW
TLL, TTM, VDO, VDM, GNS, MTA
RMA, DBT, DPT, MWV, BWC, XTE, ZDL, WPL, AAM,
APB, BOD, RMB, DSC, MDA, RPM, XDR

OUTPUT:
Baudrate : Selectable 4800, 9600, 19200, 38400
GGA, GLL, RMC, GSA, GSV, AAM, APA
APB, BOD, BWC, BWR, DBT, DPT, HDT
MTW, RMB, TLL, VTG, WPL, XTE, ZDA
ZTG, ZDL, MWD, VPW, VWR, VWT
Outputs for autopilot:
APA, APB, BOD, XTE

AIS INTERFACE

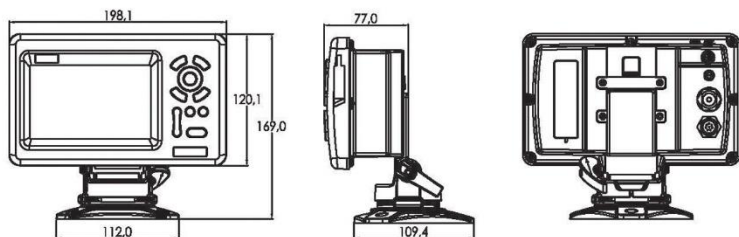
AIS Data: RS232 output VDO, VDM, GGA, GSA, GSV and VTG
AIS Input Baudrate: 38,400 from GPS Input Port

POWER SUPPLY

10.5 to 30VDC, current drain 1.0A at 12V

DIMENSIONS (DISPLAY UNIT)

KP-38



GPS RECEIVER CHARACTERISTICS

| | |
|---------------------------|--|
| Receiver | 50 parallel channel GNSS receiver continuously tracks and uses up to 50 satellites to compute and update your position |
| Acquisition time | Cold start: 29 seconds Hot start: 1 second |
| Update rate | 1 second or 0.1 second selectable |
| Accuracy | Position: 3 meters(95%) without S/A Velocity: 0.1 meter/sec without S/A |
| SBAS | Supported |
| QZSS | Supported |
| Satellite System Dynamics | Choice of 4 GNSS : GPS, Beidou, GLONASS, Galileo |
| Datum | Altitude: 18,000 m |
| Antenna | Velocity: 515 m/s WGS 84 & User defined GPS Patch Antenna |

GPS INTERFACE

| | |
|---------------------|---|
| GPS Data | RS232 input/output, NMEA 0183 V3.01 and V4.11 |
| GPS Input Baudrate | Auto Scan (4800, 9600, 19200 and 38400) |
| GPS Output Baudrate | Selectable among 4800, 9600, 19200 and 38400 |

PHYSICAL

| | |
|-------------------|--|
| Size | KP-38: 169(H)mm X 198.1mm(W) X 77mm(D) |
| Weight | KP-38: 0.6Kg |
| Display | KP-38: 5-inch Color TFT dayview LCD 800x480 pixels |
| Waterproofing | Display unit: IP66 Antenna unit: IP66 |
| Temperature range | Display unit: -15°C to +55°C Antenna unit: -25°C to +70°C |

EQUIPMENT LIST

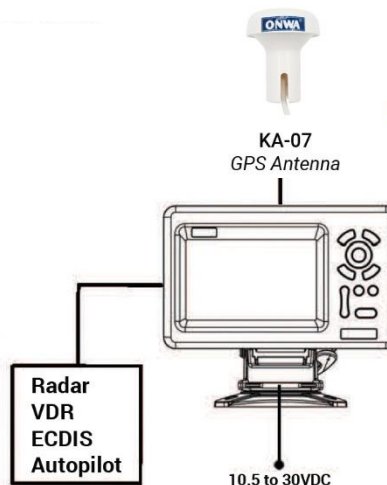
Display unit
Quick manual
Mounting Bracket
GPS Patch Antenna with 4m cable (SMA connector)
Standard Accessories Pack

OPTIONAL ACCESSORIES

GPS antenna KA-07
KC-2W (N2K to NMEA0183 Bidirectional converter)
KW-360 Ultrasonic Weather Station
KA-GC9A (Heading Sensor)



INTERCONNECTION DIAGRAM



Via S.Solimano 33 - GENOVA
Tel. 010 870058
email: apelmar@koden.it
web : www.koden.it