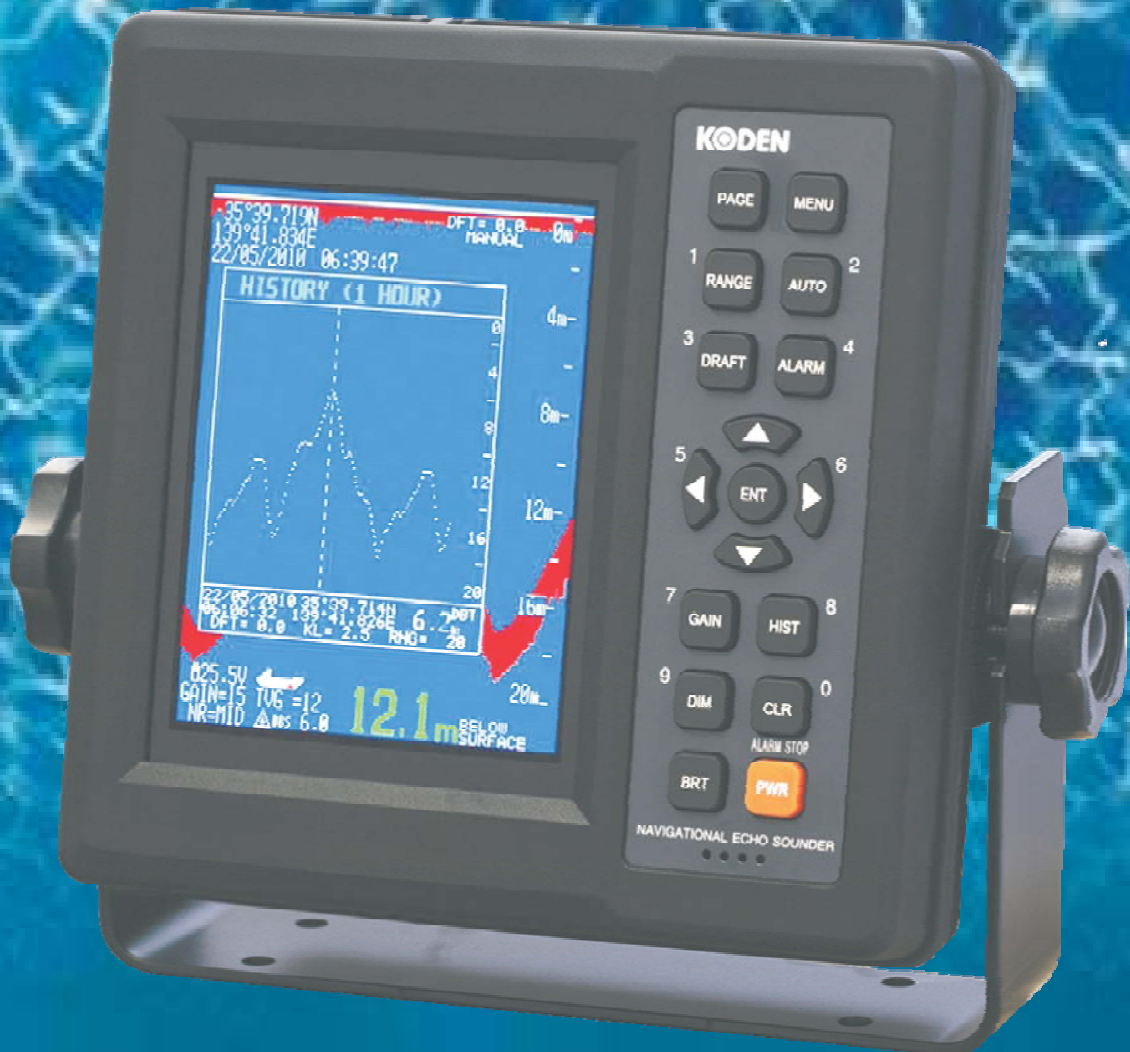


# KODEN

*New Product*

NAVIGATIONAL  
ECHO SOUNDER

# CVR-010



## *FEATURES*

- ◆ Meets IMO Standard MSC.74 (69) Annex 4
- ◆ Meets EU Marine Equipment Directive (MED)
- ◆ High Accuracy and Reliability
- ◆ 5.7-inch Compact Size Color LCD Display
- ◆ Sounding Data Storage for Last 12 hours
- ◆ Password Protection

# CVR -010

*New Product*

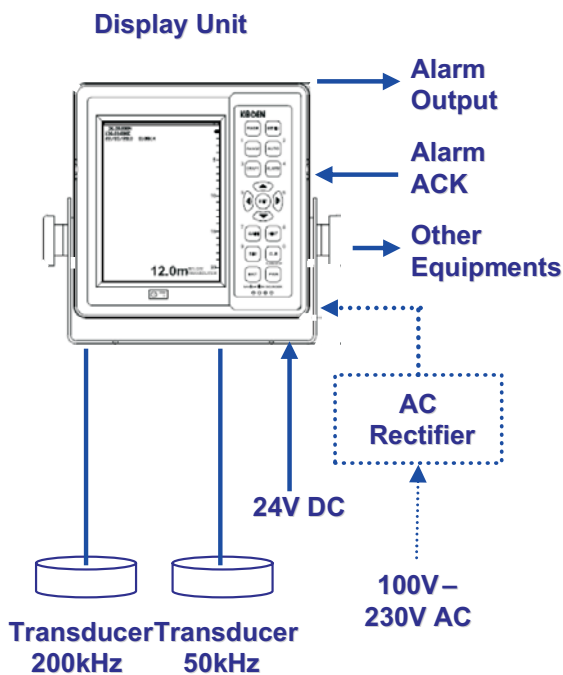
## SPECIFICATIONS

Display	5.7" Color TFT LCD (240x 320 pixels)
Echo Color	8 colors
Frequency	50kHz or 200kHz
Range Scale	5, 10, 20, 40, 100, 200, 400, 800m
Depth Unit	meter, feet, fathom
Minimum Sounding Depth	1.0m (200kHz), 2.0m (50kHz)
Discrimination	5.0mm per meter in 20m range
	0.5mm per meter in 200m range
Depth Accuracy	±2.5%
Draft Adjustment	30m in 0.1m step
Auto Function	TVG, Gain, Range
Alarm Function	Depth, Lost Bottom and Power fail
Play Back Time	12 hours
Transducer	TGM60-50 : 50kHz
	TGM80-200 : 200kHz
Output Power	600W
Interface	RS422 x2, NMEA0183 x1, Ext. Alarm x1
Power Supply	24V DC(10.5-40V DC)/100V-230V AC
Power Consumption	Less than 15W
Operating Temperature	-20°C to +55°C

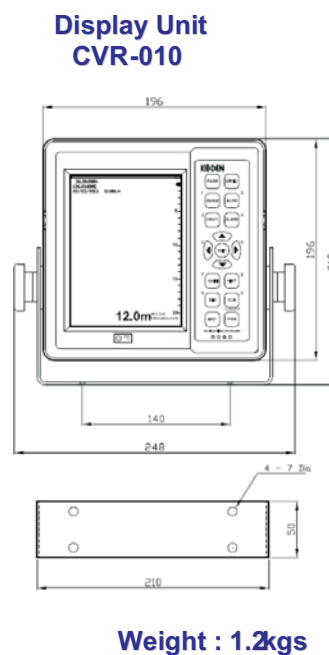
## STANDARD COMPONENTS

Description	Code	Q'ty
Display Unit	CVR-010	1
DC Power Cable	CW-272-3M (3m)	1
Fuse	F-7142-2A (2A)	2
	F-7142-3A (3A)	2
Connector	CP111-2P	1
	HS21P-3	1
	CP111-6P	1
	CP111-8P	1
	HDES-9P	2
Transducer	TGM60-50 (50kHz) or TGM80-200 (200kHz)	1
Instruction Manual	CVR-010 OME.	1

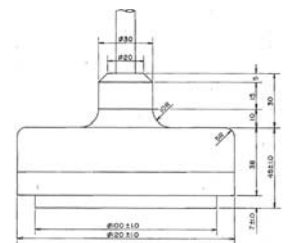
## CONNECTION DIAGRAM



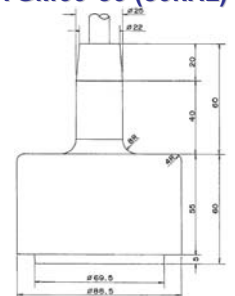
## DIMENSIONS & WEIGHT



**Transducer TGM80-200 (200kHz)**



**Transducer TGM60-50 (50kHz)**



Agenzia  
ufficiale per  
l'Italia :



Telefono 010 870058 r.a.  
Telefax 010 870248  
e-mail: [apelmar@koden.it](mailto:apelmar@koden.it)  
<http://www.koden.it>

Per ulteriori informazioni rivolgersi a: